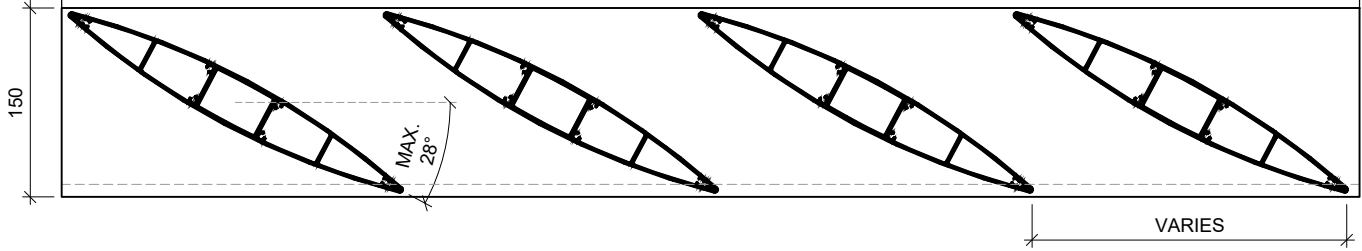
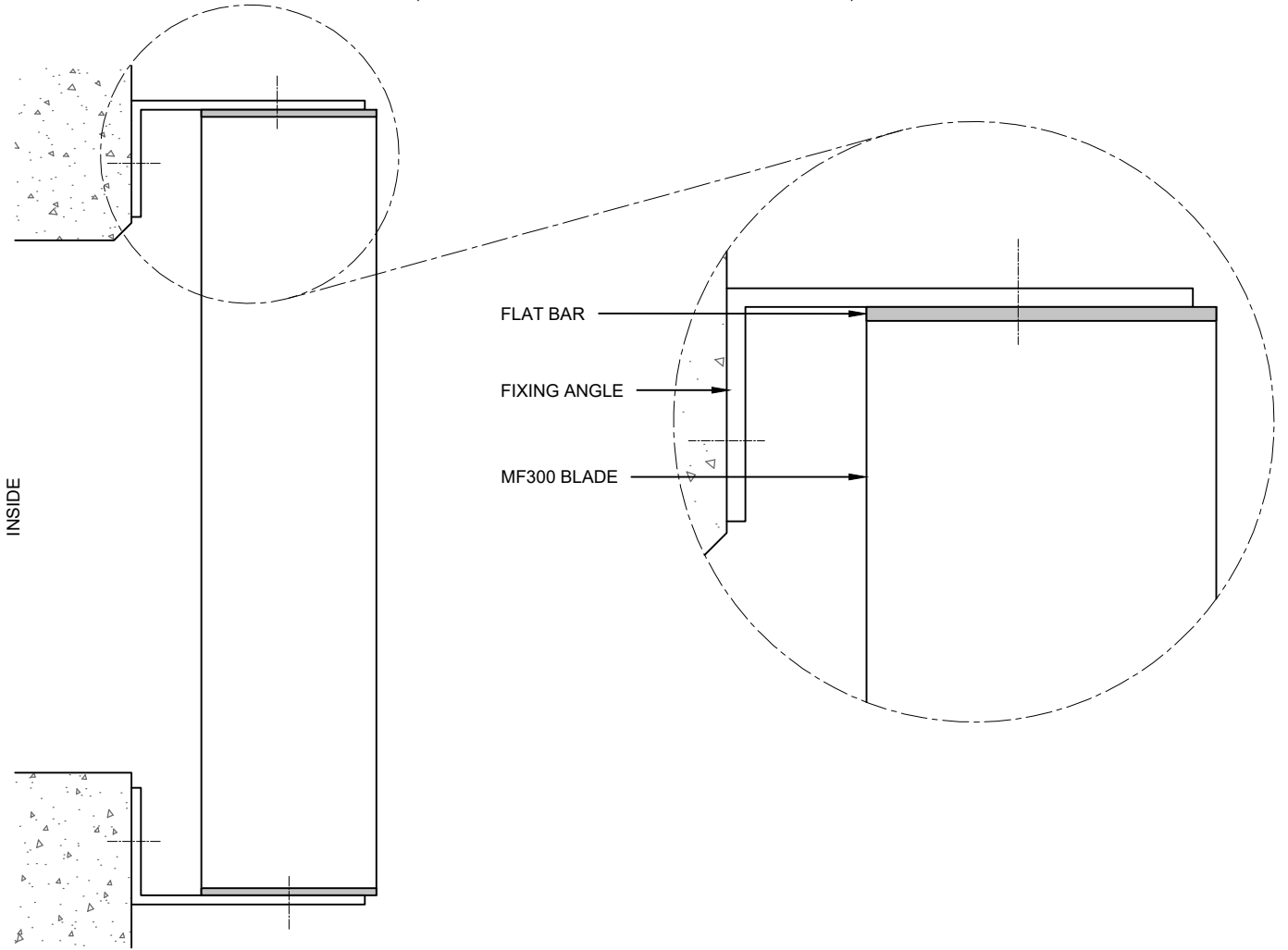


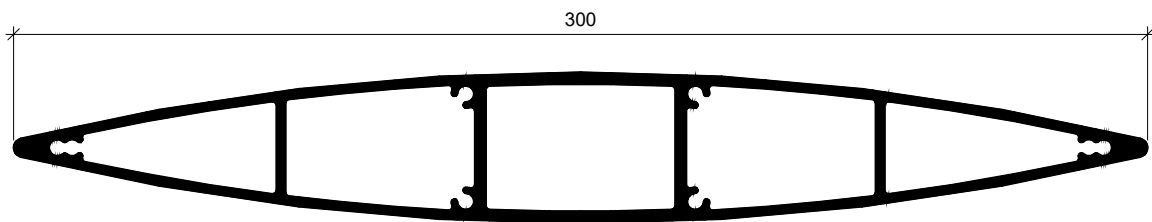
INSIDE



**PLAN VIEW**  
(BLADES MOUNTED VERTICALLY)  
(FINS CAN BE IN OPPOSITE DIRECTION AS SHOWN)



**SECTION**



**MF300 BLADE**

**MF300 MAXIM ELLIPTICAL FINS  
FIXED WITH FLAT BAR - FACE FIX**

FINS CAN ALSO BE MOUNTED HORIZONTALLY  
ALSO AVAILABLE FOR 90, 150, 200

[www.maximlouvres.com.au](http://www.maximlouvres.com.au)

**maxim**®  
**louvres**

DWG No.: MF300 Flat Bar - FF  
DWG Date: 30.07.2024 - R01