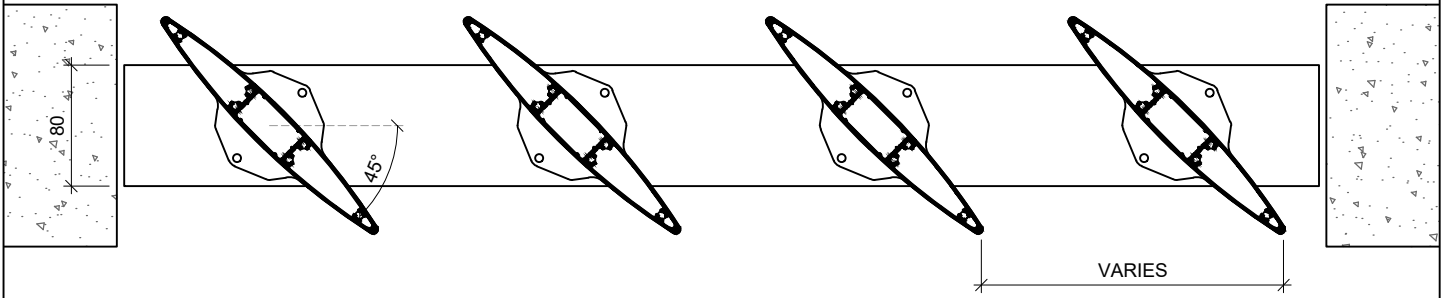
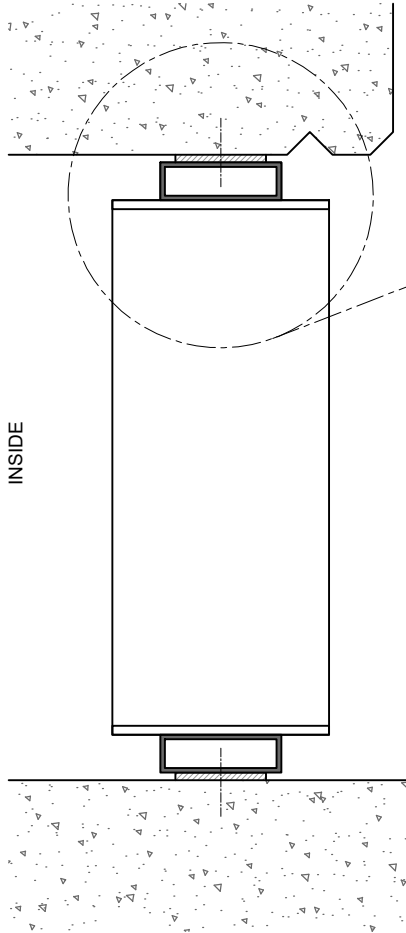


INSIDE



**PLAN VIEW**  
 (BLADES MOUNTED VERTICALLY)  
 (FINS CAN BE IN OPPOSITE DIRECTION AS SHOWN)

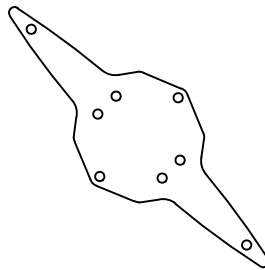


**SECTION**

RHS 80x25x3

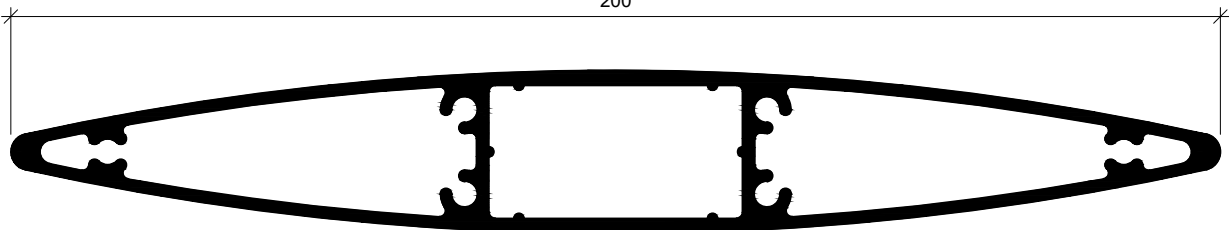
REVEAL PLATE

MF200 BLADE



TYPICAL MF200 REVEAL  
 PLATE DETAIL @ 45° \*

200



**MF200 BLADE**

\* REVEAL PLATE DESIGN DEPENDS ON PROJECT / SITE REQUIREMENTS

**MF200 MAXIM ELLIPTICAL FINS  
 FIXED WITH RHS + REVEAL PLATE - REVEAL FIX**

FINS CAN ALSO BE MOUNTED HORIZONTALLY  
 ALSO AVAILABLE FOR 150, 300, 400, 600, 800

[www.maximlouvres.com.au](http://www.maximlouvres.com.au)

**maxim**®  
**louvres**

DWG No.: MF200 RHS + RP - RF  
 DWG Date: 30.07.2024 - R01