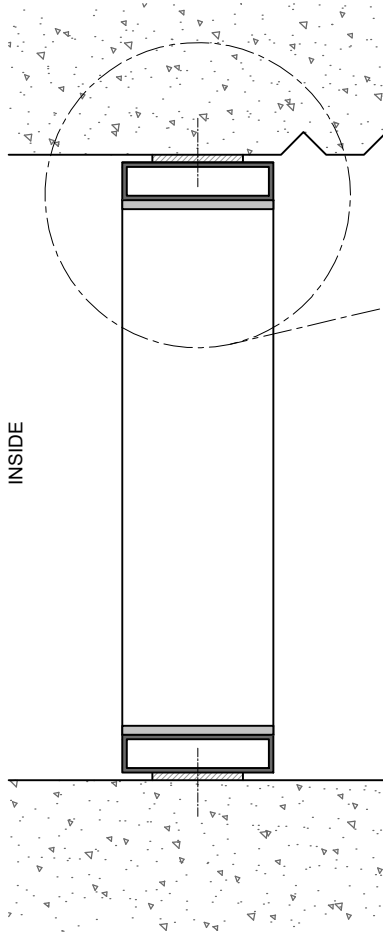


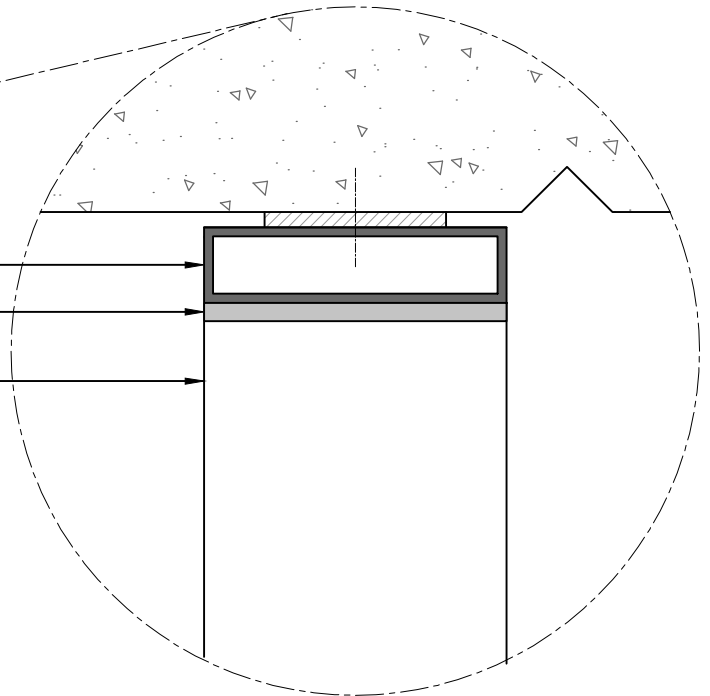
OPTION:
 FLAT BAR 100x6
 BLADE @ 28° OR LESS

PLAN VIEW
 (BLADES MOUNTED VERTICALLY)
 (FINS CAN BE IN OPPOSITE DIRECTION AS SHOWN)

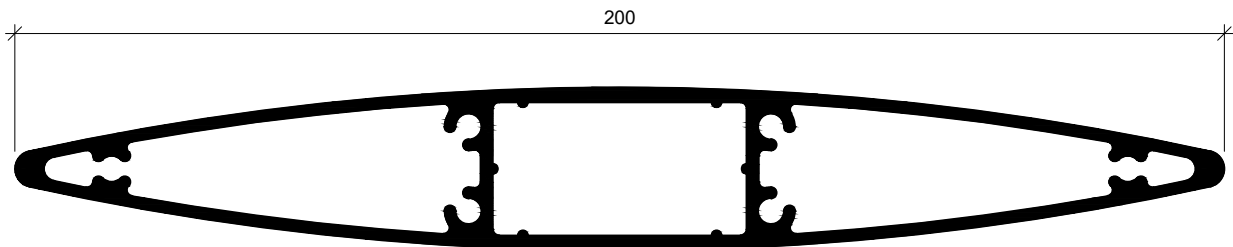
OPTION:
 FLAT BAR 150x6
 BLADE @ 45° OR LESS



RHS 100x25x3
 FLAT BAR
 MF200 BLADE



SECTION



MF200 BLADE

**MF200 MAXIM ELLIPTICAL FINS
 FIXED WITH RHS + FLAT BAR - REVEAL FIX**

FINS CAN ALSO BE MOUNTED HORIZONTALLY
 ALSO AVAILABLE FOR 150, 300, 400

www.maximlouvres.com.au

maxim®
 louvres

DWG No.: MF200 RHS + FB - RF
 DWG Date: 30.07.2024 - R01