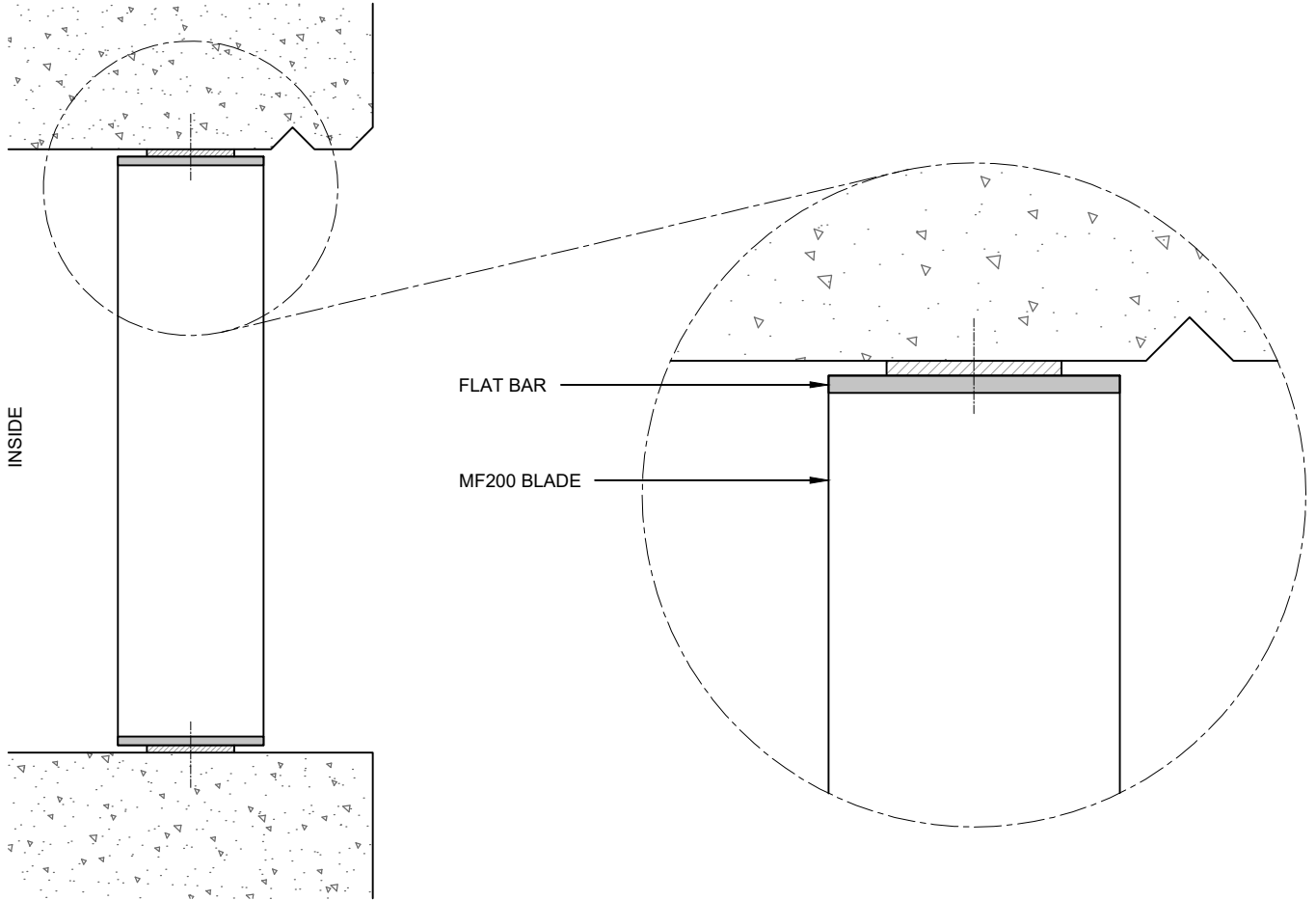


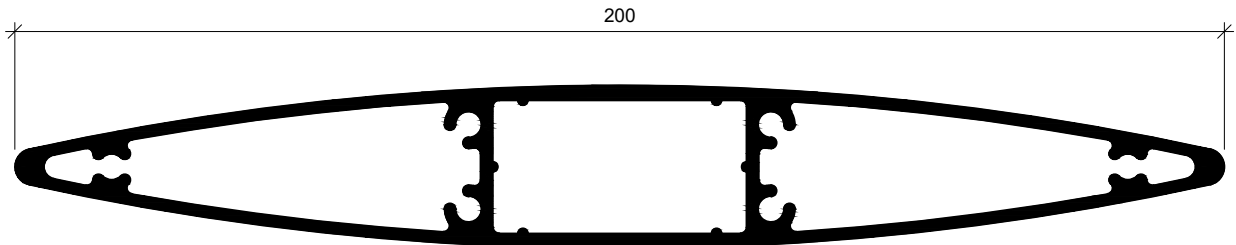
OPTION:
 FLAT BAR 100x6
 BLADE @ 28° OR LESS

PLAN VIEW
 (BLADES MOUNTED VERTICALLY)
 (FINS CAN BE IN OPPOSITE DIRECTION AS SHOWN)

OPTION:
 FLAT BAR 150x6
 BLADE @ 45° OR LESS



SECTION



MF200 BLADE

**MF200 MAXIM ELLIPTICAL FINS
 FIXED WITH FLAT BAR - REVEAL FIX**

FINS CAN ALSO BE MOUNTED HORIZONTALLY
 ALSO AVAILABLE FOR 150, 300, 400, 600, 800

www.maximlouvres.com.au

maxim®

louvre

DWG No.: MF200 Flat Bar - RF
 DWG Date: 30.07.2024 - R01