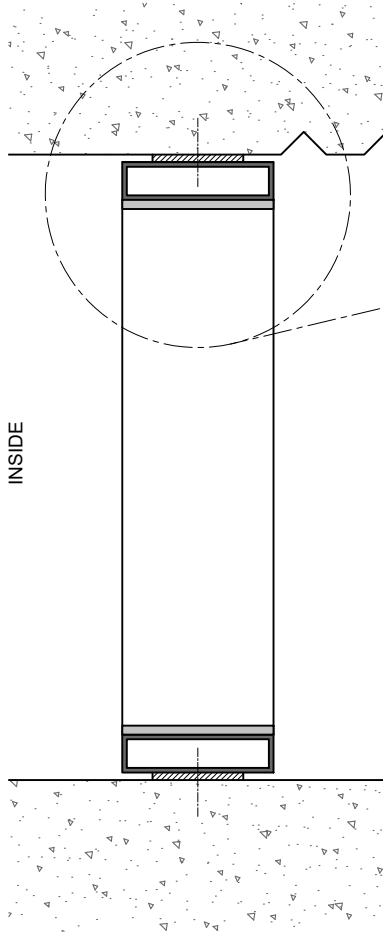


**OPTION:**  
 FLAT BAR 100x6  
 BLADE @ 28° OR LESS

**PLAN VIEW**  
 (BLADES MOUNTED VERTICALLY)  
 (FINS CAN BE IN OPPOSITE DIRECTION AS SHOWN)

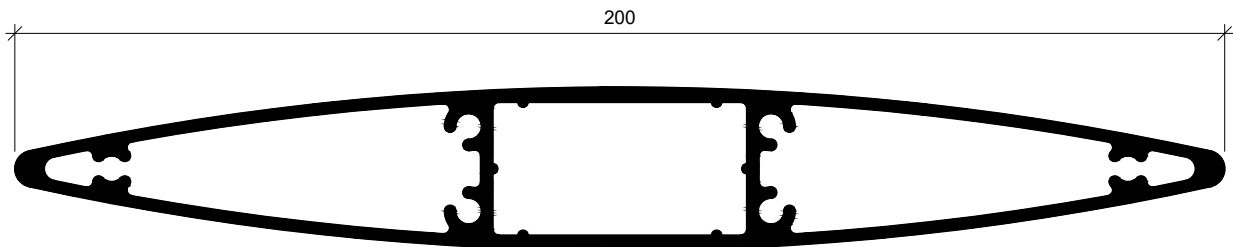
**OPTION:**  
 FLAT BAR 100x6  
 BLADE @ 45° OR LESS



INSIDE

RHS 100x25x3  
 FLAT BAR  
 100/150x6  
 MF200 BLADE  
 @28°

SECTION



MF200 BLADE

**MF200 MAXIM ELLIPTICAL FINS  
 FIXED WITH RHS + FLAT BAR - REVEAL FIX**

FINS CAN ALSO BE MOUNTED HORIZONTALLY  
 ALSO AVAILABLE FOR 150, 300, 400

[www.maximlouvres.com.au](http://www.maximlouvres.com.au)

**maxim**®  
 louvres

DWG No.: MF200 RHS + FB - RF  
 DWG Date: 19.02.2024