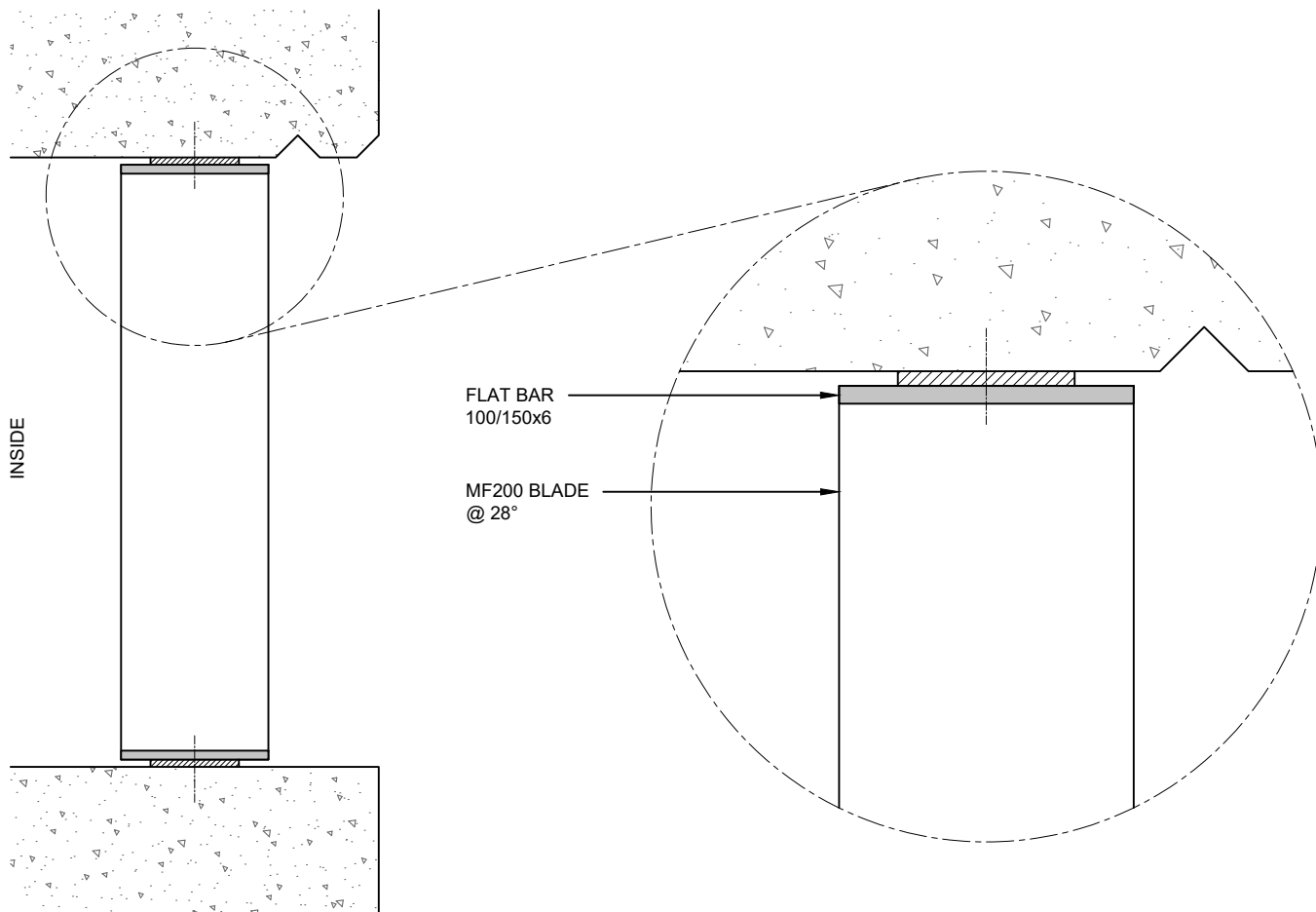


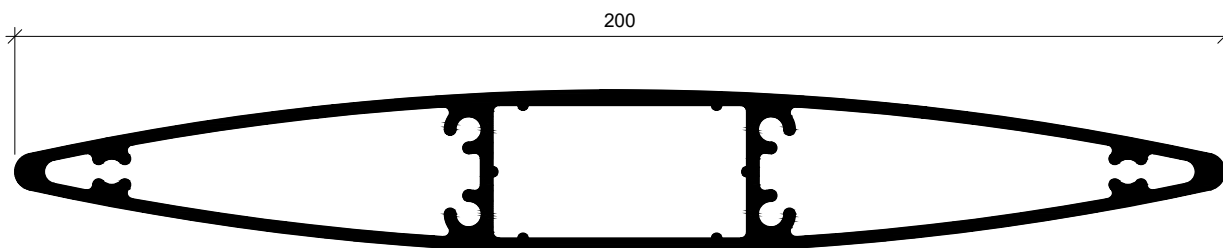
**OPTION:**  
FLAT BAR 100x6  
BLADE @ 28° OR LESS

**PLAN VIEW**  
(BLADES MOUNTED VERTICALLY)  
(FINS CAN BE IN OPPOSITE DIRECTION AS SHOWN)

**OPTION:**  
FLAT BAR 100x6  
BLADE @ 45° OR LESS



**SECTION**



**MF200 BLADE**

## MF200 MAXIM ELLIPTICAL FINS FIXED WITH FLAT BAR - REVEAL FIX

FINS CAN ALSO BE MOUNTED HORIZONTALLY  
ALSO AVAILABLE FOR 150, 300, 400, 600, 800

[www.maximlouvres.com.au](http://www.maximlouvres.com.au)

**maxim**®  
louvres

DWG No.: MF200 Flat Bar - RF  
DWG Date: 19.02.2024